

Quick Guide.

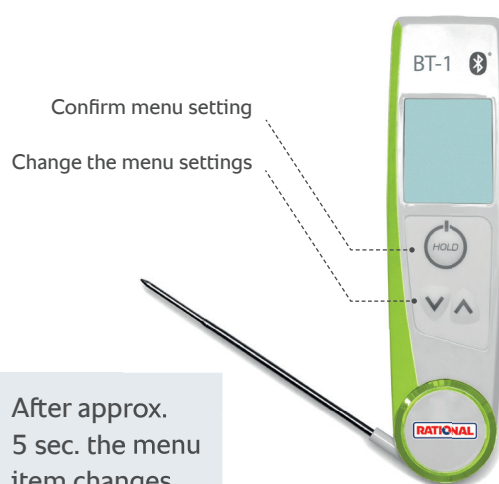
One-time changes before commissioning and use.








One-time preparations before commissioning

- ❶ Charge the cooking system via USB cable
- ❷ Switch from degrees Celsius (°C) to degrees Fahrenheit (°F)
- ❸ ON /OFF infrared – laser pointer
- ❹ Refractive index setting
- ❺ ON / OFF Auto Hold function
- ❻ ON / OFF LCD rotation
- ❼ ON / OFF Backlight

Reach the settings menu by simultaneously pressing the buttons   



❶ After approx. 5 sec. the menu item changes automatically

Menu item	Presetting	LCD display
UNIT › Temperature UNIT: [°C / °F]	°C	
LASR › Laser pointer: [ON / OFF]	ON	
EMIS › Infrared – Refractive index [10 ...100]	95	
AHLD › Insertion sensor Auto Hold function: [ON / OFF]	ON	
LCDR › LCD rotation: [ON / OFF]	ON	
BCKL › Backlight: [ON / OFF]	ON	